



RECYCLING CALENDAR 2022

SNOW PLOWING AND YOUR MAILBOX

Proper curbside installation is crucial to the survival of your mailbox during the winter snow events. Our plow operators clear accumulations to the curb to provide safe streets and to minimize flooding from blocked storm drains. Mailbox installations must be sturdy enough to withstand discharged snow and adequate clearance must be present between the curb and the box for plow passage.

Below are some tips on curbside mailbox placement that will help reduce the chance of damage during snow plowing operations.

The Borough will only repair or replace mailboxes that are installed according to USPS guidelines below and are struck by a plow. Mailboxes will not be replaced due to snow discharged properly from Borough equipment. Any mailboxes replaced by the Borough will be standard quality only.

Please visit www.usps.com/manage/mailboxes.htm for additional information.



TINTON FALLS EMERGENCY NOTIFICATION SYSTEM

To make sure you receive notifications, please register at:
www.tintonfalls.com (Click on the **EMERGENCY ALERT SYSTEM**)
If you don't have internet access, please call 732-542-3400 ext. 555 to register.

BOROUGH RECYCLING CENTER SPECIAL HOLIDAY HOURS

From December 22, 2021 until January 7, 2022 Public Works will be providing seven days per week access to its recycling center to drop off extra recyclables "single stream style," extra household refuse, cardboard and Holiday trees. Please use the bins marked for your items and come whenever you want!

COMMUNITY EMERGENCY RESPONSE TEAM

The Community Emergency Response Team (CERT) program helps train people to be better prepared to respond to emergency situations in their communities. When emergencies happen, CERT members can give critical support to first responders, provide immediate assistance to victims, and organize spontaneous volunteers at a disaster site. CERT members can also help with non-emergency projects that help improve the safety of the community. CERT is a nation wide initiative

Role of CERT in an Emergency

CERT has been used to:

- Search for lost children.
- Staff Emergency Operations Centers and monitor events.
- Emergency Operations Center security: driving, information, assisting disabled visitors and minor first aid.
- Manage "spontaneous/convergent" volunteers

To become a CERT member you must be at least 18 years of age.

If you want to volunteer your services and become trained to protect yourself and families from disaster, natural or man-made, become a CERT member. Please submit your [Application Form](#) to the CERT Coordinator.

For more information, please contact us at 732-542-3400 ext. 555



2022 HOLIDAY TREES



Holiday Tree collection will start on January 14th and will continue until February 4, 2022

If you miss the tree collection, you may bring your tree to the recycling center located behind Borough Hall or wait for your scheduled zone pick up for brush and branch. Place your tree at the curb free of ornaments and bags as the ornaments and bags cannot be recycled. Wreaths and garland made from trees may be placed in your refuse container.

January 2022



Sunday	Monday	Tuesday	Wednesday	Thursday	Friday	Saturday
26	27	28	29	30	31 SEWER BILLS ARE DUE ON THE 1ST BOROUGH HOLIDAY	1
2	3 CURBSIDE GARBAGE COLLECTION - BRUSH COLLECTION BEGINS ZONE 1	4 CURBSIDE GARBAGE COLLECTION	5 BULK & METAL COLLECTION BY APPOINTMENT. NORTH	6 IF MONDAY IS YOUR GARBAGE DAY, TODAY IS YOUR RECYCLING DAY	7	8
9	10 CURBSIDE GARBAGE COLLECTION - BRUSH COLLECTION BEGINS ZONE 2	11 CURBSIDE GARBAGE COLLECTION	12 BULK & METAL COLLECTION BY APPOINTMENT. SOUTH	13 IF TUESDAY IS YOUR GARBAGE DAY, TODAY IS YOUR RECYCLING DAY	14 HOLIDAY TREE COLLECTION BEGINS	15
16	17 BOROUGH HOLIDAY	18 CURBSIDE GARBAGE COLLECTION - BRUSH COLLECTION BEGINS ZONE 3	19 MONDAY HOLIDAY GARBAGE COLLECTION	20 IF MONDAY IS YOUR GARBAGE DAY, TODAY IS YOUR RECYCLING DAY	21 BULK & METAL COLLECTION BY APPOINTMENT. NORTH	22
23	24 CURBSIDE GARBAGE COLLECTION - BRUSH COLLECTION BEGINS ZONE 4	25 CURBSIDE GARBAGE COLLECTION	26 BULK & METAL COLLECTION BY APPOINTMENT. SOUTH	27 IF TUESDAY IS YOUR GARBAGE DAY, TODAY IS YOUR RECYCLING DAY	28	29
30	31	1	2	3	4	5

BOROUGH RECYCLING CENTER IS OPEN MONDAY - SATURDAY 7:00 AM - 3:00 PM - CLOSED HOLIDAYS

TINTON FALLS PLANNING BOARD

The Planning Board reviews permitted Site Plans and Subdivisions for conformance with Borough standards.

The Board is comprised of 9 Regular Members and 2 Alternate Members who are appointed by the Mayor.

The Planning Board has four different classes of individuals who serve on the Board, a Class I, Class II, Class III & Class IV Member. The Class I Member is the Mayor or in their absence the Mayor's Designee. The Class II Member is a municipal employee, the Class III Member is a member of the Governing Body, and the Class IV Members are citizens of the Borough of Tinton Falls.

The Planning Board meets the second and fourth Wednesdays of each month with the exception of holidays and Thanksgiving Eve.

Planning Board Contact

PHONE: 732-542-3400 ext. 215

EMAIL: planningboard@tintonfalls.com



TINTON FALLS CLOTHING DROP OFF ITEMS ACCEPTED

All clothing, shoes, sneakers, belts, purses, blankets, sheets, pillowcases, drapes and stuffed toys.

ITEMS NOT ACCEPTED

No rags, fabric scraps, toys or household goods.

Donations will not be cut up or shredded.

Your donation benefits Tinton Falls Police Youth programs and Tinton Falls Recycling Education programs.

There are two drop off locations available
24 hours a day at

556 Tinton Avenue Tinton Falls
4057 Asbury Avenue Tinton Falls



February 2022



Sunday	Monday	Tuesday	Wednesday	Thursday	Friday	Saturday
30	31 PROPERTY TAXES ARE DUE ON THE 1ST	1 CURBSIDE GARBAGE COLLECTION	2 BULK & METAL COLLECTION BY APPOINTMENT. NORTH	3 IF MONDAY IS YOUR GARBAGE DAY, TODAY IS YOUR RECYCLING DAY	4 HOLIDAY TREE COLLECTION ENDS	5
6	7 CURBSIDE GARBAGE COLLECTION · BRUSH COLLECTION BEGINS ZONE 1	8 CURBSIDE GARBAGE COLLECTION	9 BULK & METAL COLLECTION BY APPOINTMENT. SOUTH	10 IF TUESDAY IS YOUR GARBAGE DAY, TODAY IS YOUR RECYCLING DAY	11	12
13	14 CURBSIDE GARBAGE COLLECTION · BRUSH COLLECTION BEGINS ZONE 2	15 CURBSIDE GARBAGE COLLECTION	16 BULK & METAL COLLECTION BY APPOINTMENT. NORTH	17 IF MONDAY IS YOUR GARBAGE DAY, TODAY IS YOUR RECYCLING DAY	18	19
20	21 BOROUGH HOLIDAY	22 CURBSIDE GARBAGE COLLECTION · BRUSH COLLECTION BEGINS ZONE 3	23 MONDAY HOLIDAY GARBAGE COLLECTION	24 IF TUESDAY IS YOUR GARBAGE DAY, TODAY IS YOUR RECYCLING DAY	25 BULK & METAL COLLECTION BY APPOINTMENT. SOUTH	26
27	28 CURBSIDE GARBAGE COLLECTION · BRUSH COLLECTION BEGINS ZONE 4	1 HOLIDAY TREE COLLECTION ENDS	2	3	4	5

BOROUGH RECYCLING CENTER IS OPEN MONDAY - SATURDAY 7:00 AM - 3:00 PM - CLOSED HOLIDAYS

Compost & Woodchips

The rich soil formed from your composted Tinton Falls leaves is available FREE at the Tinton Falls Recycling Center behind Borough Hall. Please take a bucket of this "black gold" and watch it work wonders in your garden! Woodchips are also FREE when available. Delivery is available at a minimal charge if equipment and manpower are available.



Automated Can Repair

In the event your garbage or recycling can is damaged
the Borough will replace your can at no cost.

Call the Department of Public Works if you have a problem
with your can and we will schedule an appointment for repair or replacement

732-542-3400 x 4

Additional green automated cans and blue automated cans are
available for lease @ \$55.00 per can.



TINTON FALLS COMMUNITY GARDENS

We currently have 2 community garden locations in Tinton Falls. Garden

Locations: TFCG-1 750 Tinton Avenue TFCG-2 Water Street.

The first garden began in 2010 at the historic Crawford House at 750 Tinton Avenue. Built in the early-to-mid 19th century, the Crawford House is among the most significant historic landmarks in Tinton Falls. The community garden supports the farm stand which operates at the Crawford House on Saturday mornings during the growing season.

Each garden is divided into plots, which are assigned to individual members. Members are responsible for the care and maintenance of their designated areas (including planting, weeding, watering, harvesting, etc) and members enjoy the fruits of their labor. Members are also asked to participate in preparing the garden at the beginning of the season and cleaning up the garden at the end of the season.

People can participate on a variety of levels. Those who wish to become members are assigned a garden plot and must commit to caring for that plot as well as participate in common maintenance activities.

There are also opportunities for full membership. For instance, those who are interested may participate in "garden workdays," which are scheduled throughout the season. In addition, community groups may arrange organized visits to the site and participate in gardening activities as appropriate.

How can you find out more?

To obtain more information, contact E-mail:
tfcommunitygardens.info@gmail.com

March 2022



Sunday	Monday	Tuesday	Wednesday	Thursday	Friday	Saturday
27	28	1 CURBSIDE GARBAGE COLLECTION	2 BULK & METAL COLLECTION BY APPOINTMENT. NORTH	3 IF MONDAY IS YOUR GARBAGE DAY, TODAY IS YOUR RECYCLING DAY	4	5
6	7 CURBSIDE GARBAGE COLLECTION - BRUSH COLLECTION BEGINS ZONE 1	8 CURBSIDE GARBAGE COLLECTION	9 BULK & METAL COLLECTION BY APPOINTMENT. SOUTH	10 IF TUESDAY IS YOUR GARBAGE DAY, TODAY IS YOUR RECYCLING DAY	11	12
13	14 CURBSIDE GARBAGE COLLECTION - BRUSH COLLECTION BEGINS ZONE 2	15 CURBSIDE GARBAGE COLLECTION	16 BULK & METAL COLLECTION BY APPOINTMENT. NORTH	17 IF MONDAY IS YOUR GARBAGE DAY, TODAY IS YOUR RECYCLING DAY	18	19
20	21 CURBSIDE GARBAGE COLLECTION - BRUSH COLLECTION BEGINS ZONE 3	22 CURBSIDE GARBAGE COLLECTION	23 BULK & METAL COLLECTION BY APPOINTMENT. SOUTH	24 IF TUESDAY IS YOUR GARBAGE DAY, TODAY IS YOUR RECYCLING DAY	25	26
27	28 CURBSIDE GARBAGE COLLECTION - BRUSH COLLECTION BEGINS ZONE 4	29 CURBSIDE GARBAGE COLLECTION	30 NO BULK OR METAL COLLECTION TODAY	31 NO RECYCLING COLLECTION TODAY	1	2

BOROUGH RECYCLING CENTER IS OPEN MONDAY - SATURDAY 7:00 AM - 3:00 PM - CLOSED HOLIDAYS

SHADE TREE COMMISSION

THE TINTON FALLS SHADE TREE COMMISSION PROVIDES
ADVICE REGARDING STREET TREES.

THE COMMISSION MEETS ON THE SECOND TUESDAY OF THE MONTH TO
REVIEW PLANS SUBMITTED BY DEVELOPERS AND HOMEOWNERS. REPORTS
ARE PROVIDED TO THE PLANNING BOARD, THE ZONING BOARD OF
ADJUSTMENT AND THE BUILDING DEPARTMENT.

THE COMMISSION ALSO SPONSORS THE ARBOR DAY PROGRAM

THERE ARE FIVE MEMBERS ON THE COMMISSION, APPOINTED BY THE
MAYOR TO STAGGERED FIVE YEAR TERMS.

THE COMMISSION MAY BE CONTACTED THROUGH THE CODE/ZONING
DEPARTMENT (732) 542-3400 EXT. 267.



SPRING CLEANUP APRIL 2022

Spring cleanup week gives residents the opportunity to put out furniture, fence, wood, etc. for collection. Wood must be bundled and tied. Bundles shall be no longer than 5 feet and no heavier than 50 pounds each.

Unlike the regular twice a month bulk collection, there is no appointment required for spring cleanup. Items should be placed out according to the zone schedule.

The following items will not be collected as part of spring cleanup. These items should be disposed of in the regular manner:

- **Metal items or appliances** (Call for an appointment)
- **Concrete/ brick/ asphalt**
- **Construction debris**- Created or left by an outside contractor
- **Creosoted lumber**- Will not be collected. However, wood swing sets will be collected if broken down and tied up.
- **Hazardous waste**- No paint, pesticides, etc.
- **Boxed or bagged items**- Place bagged garbage in refuse container. Breakdown your cardboard boxes and place in your blue automated container for collection.
- **Brush and leaves**- Collected separately, by zone by a separate truck.

2022 CLEANUP SCHEDULE

Spring Cleanup will be by the same
zone schedule as brush collection:

ZONE	Put items out	Items will be collected
1	Sat/Sun 4/2 - 4/3	Mon to Fri 4/4 - 4/8
2	Sat/Sun 4/9 - 4/10	Mon to Fri 4/11 - 4/15
3	Sat/Sun 4/16 - 4/17	Mon to Fri 4/18 - 4/22
4	Sat/Sun 4/23 - 4/24	Sat/Sun 4/25 - 4/29

Help us keep our Borough clean. Please do not litter.
Report to the Public Works Department
if you notice a heavily littered road.
DON'T LITTER - HELP TINTON FALLS GLITTER!

April 2022



Sunday	Monday	Tuesday	Wednesday	Thursday	Friday	Saturday
27	28	29	30	31 SEWER BILLS ARE DUE ON THE 1ST	1	2
3 SPRING CLEAN UP ZONE 1 STARTS MONDAY	4 CURBSIDE GARBAGE COLLECTION - BRUSH COLLECTION BEGINS ZONE 1	5 CURBSIDE GARBAGE COLLECTION	6 METAL COLLECTION BY APPOINTMENT. NORTH	7 IF MONDAY IS YOUR GARBAGE DAY, TODAY IS YOUR RECYCLING DAY	8	9
10 SPRING CLEAN UP ZONE 2 STARTS MONDAY	11 CURBSIDE GARBAGE COLLECTION - BRUSH COLLECTION BEGINS ZONE 2	12 CURBSIDE GARBAGE COLLECTION	13 METAL COLLECTION BY APPOINTMENT. SOUTH	14 IF TUESDAY IS YOUR GARBAGE DAY, TODAY IS YOUR RECYCLING DAY	15 BOROUGH HOLIDAY	16
17 SPRING CLEAN UP ZONE 3 STARTS MONDAY	18 CURBSIDE GARBAGE COLLECTION - BRUSH COLLECTION BEGINS ZONE 3	19 CURBSIDE GARBAGE COLLECTION	20 METAL COLLECTION BY APPOINTMENT. NORTH	21 IF MONDAY IS YOUR GARBAGE DAY, TODAY IS YOUR RECYCLING DAY	22	23
24 SPRING CLEAN UP ZONE 4 STARTS MONDAY	25 CURBSIDE GARBAGE COLLECTION - BRUSH COLLECTION BEGINS ZONE 4	26 CURBSIDE GARBAGE COLLECTION	27 METAL COLLECTION BY APPOINTMENT. SOUTH	28 IF TUESDAY IS YOUR GARBAGE DAY, TODAY IS YOUR RECYCLING DAY	29	30

BOROUGH RECYCLING CENTER IS OPEN MONDAY - SATURDAY 7:00 AM - 3:00 PM - CLOSED HOLIDAYS



BAG UP NJ

Bring Reusable Bags

www.BagUpNJ.com



for a Greener Tinton Falls!



The Memorial Day services have been maintained by 3 generations of the Neis family since 1976. The original monument was in a hedge row in front of the Sycamore School now Mahala F. Atchison but due to the expected expansion of the school the monument was moved to the triangle on Firehouse Road, Sycamore Ave and Tinton Ave where it served as the annual meeting place for many years. As the attendance grew the monument needed to be moved to a place where the attendance could be increased without vehicle noise and plenty of parking. This is why the soccer complex was chosen. The monument as you see it today was built by Zach Neis for his Eagle Scout project keeping the tradition in the family.

Our ceremony is attended by many veterans, the VFW, all of our Fire Departments and EMS Squads, as well as the TFPD. All of the rear groove marks on the monument represent each branch of our volunteer services.

The monument has been maintained by the Neis family with help from the TFDPW Parks crew. Please come and partake in this ceremony to thank those men and women of our armed forces who gave the ultimate sacrifice so we could live in a free society today.

May 2022



Sunday	Monday	Tuesday	Wednesday	Thursday	Friday	Saturday
1 PROPERTY TAXES ARE DUE	2 CURBSIDE GARBAGE COLLECTION - BRUSH & LEAF COLLECTION BEGINS ZONE 1	3 CURBSIDE GARBAGE COLLECTION	4 BULK & METAL COLLECTION BY APPOINTMENT. NORTH	5 IF MONDAY IS YOUR GARBAGE DAY, TODAY IS YOUR RECYCLING DAY	6	7
8	9 CURBSIDE GARBAGE COLLECTION - BRUSH & LEAF COLLECTION BEGINS ZONE 2	10 CURBSIDE GARBAGE COLLECTION	11 BULK & METAL COLLECTION BY APPOINTMENT. SOUTH	12 IF TUESDAY IS YOUR GARBAGE DAY, TODAY IS YOUR RECYCLING DAY	13	14
15	16 CURBSIDE GARBAGE COLLECTION - BRUSH & LEAF COLLECTION BEGINS ZONE 3	17 CURBSIDE GARBAGE COLLECTION	18 BULK & METAL COLLECTION BY APPOINTMENT. NORTH	19 IF MONDAY IS YOUR GARBAGE DAY, TODAY IS YOUR RECYCLING DAY	20	21
22	23 CURBSIDE GARBAGE COLLECTION - BRUSH & LEAF COLLECTION BEGINS ZONE 4	24 CURBSIDE GARBAGE COLLECTION	25 BULK & METAL COLLECTION BY APPOINTMENT. SOUTH	26 IF TUESDAY IS YOUR GARBAGE DAY, TODAY IS YOUR RECYCLING DAY	27	28
29	30 BOROUGH HOLIDAY	31 CURBSIDE GARBAGE COLLECTION	1	2	3	4

BOROUGH RECYCLING CENTER IS OPEN MONDAY - SATURDAY 7:00 AM - 3:00 PM - CLOSED HOLIDAYS



TINTON FALLS NEIGHBORHOOD WATCH

The Tinton Falls Neighborhood Watch is the cornerstone of all crime prevention programs. It enlists the active participation of citizens in cooperation with law enforcement to reduce burglaries and other neighborhood crimes. Its primary purpose is the protection of property - yours and your neighbors. Neighborhood Watch is a proven and effective means, by observations, to substantially reduce not only the incidence of residential burglaries in a specified geographical area, but the incidence of other crimes.

Who gets involved? Everyone! Get as many neighbors involved as possible. Not everyone will want to be part of the program, and that's alright. Make sure they know about the Neighborhood Watch program and that they are always welcome to be part of our community meetings. Please do your part and make sure they know about all of the news and events by spreading the word. Remember, knowledge is power.

The TFNW group meets at various locations with different topics throughout the year. Although these meetings do not take place at the Borough, the dates can be found on the TF Borough "Meeting" Calendar. There you will find the dates, times, places and topics for each meeting. If you would like us to come to your venue, please contact Det. Sgt. Michael Delucia @ 732.542.3400 ext 293.

The Neighborhood Watch police liaison person is Det. Sgt. Michael Delucia. If you have a desire to start a group as part of your condo or homeowners association, please contact Det. Sgt. Michael Delucia at 732-542-3400 Ext. 293.



June 2022



Sunday	Monday	Tuesday	Wednesday	Thursday	Friday	Saturday
29	30	31	1 BOROUGH HOLIDAY GARBAGE COLLECTION	2 IF MONDAY IS YOUR GARBAGE DAY, TODAY IS YOUR RECYCLING DAY	3 BULK & METAL COLLECTION BY APPOINTMENT. NORTH	4
5	6 CURBSIDE GARBAGE COLLECTION - BRUSH COLLECTION BEGINS ZONE 1	7 CURBSIDE GARBAGE COLLECTION	8 BULK & METAL COLLECTION BY APPOINTMENT. SOUTH	9 IF TUESDAY IS YOUR GARBAGE DAY, TODAY IS YOUR RECYCLING DAY	10	11
12	13 CURBSIDE GARBAGE COLLECTION - BRUSH COLLECTION BEGINS ZONE 2	14 CURBSIDE GARBAGE COLLECTION	15 BULK & METAL COLLECTION BY APPOINTMENT. NORTH	16 IF MONDAY IS YOUR GARBAGE DAY, TODAY IS YOUR RECYCLING DAY	17 BOROUGH HOLIDAY	18
19	20 CURBSIDE GARBAGE COLLECTION - BRUSH COLLECTION BEGINS ZONE 3	21 CURBSIDE GARBAGE COLLECTION	22 BULK & METAL COLLECTION BY APPOINTMENT. SOUTH	23 IF TUESDAY IS YOUR GARBAGE DAY, TODAY IS YOUR RECYCLING DAY	24	25
26	27 CURBSIDE GARBAGE COLLECTION - BRUSH COLLECTION BEGINS ZONE 4	28 CURBSIDE GARBAGE COLLECTION	29 NO BULK OR METAL COLLECTION TODAY	30 NO RECYCLING COLLECTION TODAY		2

BOROUGH RECYCLING CENTER IS OPEN MONDAY - SATURDAY 7:00 AM - 3:00 PM - CLOSED HOLIDAYS



BOROUGH RECYCLING CENTER



556 Tinton Avenue
Tinton Falls, NJ 07724

Hours of Operation **7 am - 3 pm**
Monday through Saturday

The center is available to residents only.

Proof of residency is required.

No trucks over $\frac{3}{4}$ ton will be allowed to dump.

No vehicles with commercial license plates will be allowed to dump.

**AREA WILL BE CLOSED SUNDAYS AND HOLIDAYS
DUMPING IS PROHIBITED WHEN CENTER IS CLOSED AND UNATTENDED**

Used clothing donation bin is available 7 days per week.



HISTORIC PRESERVATION COMMISSION

The commission consists of 7 volunteer members appointed by the Mayor, and meets on the 2nd Monday of each month at 7:30 pm at The Crawford House.

The commission's primary role is advisory to the Planning Board. In the event of an application involving an historic structure or property, the Historic Preservation Commission submits a report analyzing the impact of the proposal to the property in question, and the appropriateness of the proposal in light of the property's historic significance. The Commission uses codified Architectural Design Guidelines as a basis for determining appropriateness and relies on a consultant for architectural expertise.

The Commission is also responsible for reviewing applications for zoning permits, which must be issued for certain exterior alterations to any historic structure. Currently, the only designated historic structures in the Borough are located within the Historic District. If you own a home or business in the historic district and are planning improvements to the property, please contact the Historic Commission before beginning any work. We can help you understand how to best achieve your goal while protecting the historic fabric of your property and the integrity of the historic district. We will also be happy to provide whatever resources, information, or guidance we can.

E-MAIL: HISTORIC@TINTONFALLS.COM

ITEMS LISTED BELOW ARE NOT ACCEPTED:

PAINT OR PAINT CANS
HAZARDOUS MATERIAL
TREE STUMPS OR TREE TRUNKS
MASONRY, CEMENT, ASPHALT, BRICK OR STONE
DIRT OR SAND
GRASS CLIPPINGS OR SOD
CONSTRUCTION DEBRIS

ROOFING MATERIAL
WINDOWS OR DOORS
CERAMIC TILE
WOOD FENCE OR CREOSOTED LUMBER
PALLETES
PROPANE CYLINDERS EMPTY OR FULL
FIRE EXTINGUISHERS EMPTY OR FULL

SINGLE STREAM RECYCLING

All these items can go in your automated blue can



**NEWSPAPERS
& INSERTS**
Do not tie



**MAIL &
SCHOOL OR
OFFICE
PAPER**
Do not tie or place in



CHIPBOARD
Flatten, do not tie



**MAGAZINES
& TELEPHONE
BOOKS**
Do not tie



CANS



**CORRUGATED
CARDBOARD &
BROWN PAPER
BAGS**
Flatten, do not tie



**GLASS
BOTTLES &
JARS**
Remove Caps



**PLASTIC
POURABLE
BOTTLES**
Remove Caps



All of these items **CANNOT** go in
your automated blue can and should
be placed in your **GREEN** Can



Do **NOT** Put This in Your
Recycling Cart



BOROUGH OF TINTON FALLS
DEPARTMENT OF PUBLIC WORKS
556 TINTON AVENUE
TINTON FALLS, NJ 07724
732-542-3400 X 4



Paper cups
Plastic bags
Styrofoam
VCR Tapes
Waxed Cardboard
Shredded Paper
Plastic Binders
Paper towels/tissues
Photographs
Garden Hose
Plastic Egg Cartons
Plastic and metal caps from bottles/jars
Paper milk/juice cartons
Drink boxes
Straws
Plastic or Metal Coat Hangers
Dishes & Cookware
Take out food containers
Stickers or sheets of address labels
Frozen food, ice cream or frozen juice
containers
Light Bulbs, plates or vases
Plastic 6-pack holders
Drinking glasses or window glass
Mirrors or ceramics
Foam/popcorn packaging
Plant trays
Waxed paper
Tyvek envelopes
Berry containers
Pizza box
Scrap Metal



July 2022



Sunday	Monday	Tuesday	Wednesday	Thursday	Friday	Saturday
26	27	28	29	30 SEWER BILLS ARE DUE ON THE 1st	1	2
3	4 BOROUGH HOLIDAY	5 CURBSIDE GARBAGE COLLECTION - BRUSH COLLECTION BEGINS ZONE 1	6 HOLIDAY GARBAGE COLLECTION	7 IF MONDAY IS YOUR GARBAGE DAY, TODAY IS YOUR RECYCLING DAY	8 BULK & METAL COLLECTION BY APPOINTMENT. NORTH	9
10	11 CURBSIDE GARBAGE COLLECTION - BRUSH COLLECTION BEGINS ZONE 2	12 CURBSIDE GARBAGE COLLECTION	13 BULK & METAL COLLECTION BY APPOINTMENT. SOUTH	14 IF TUESDAY IS YOUR GARBAGE DAY, TODAY IS YOUR RECYCLING DAY	15	16
17	18 CURBSIDE GARBAGE COLLECTION - BRUSH COLLECTION BEGINS ZONE 3	19 CURBSIDE GARBAGE COLLECTION	20 BULK & METAL COLLECTION BY APPOINTMENT. NORTH	21 IF MONDAY IS YOUR GARBAGE DAY, TODAY IS YOUR RECYCLING DAY	22	23
24	25 CURBSIDE GARBAGE COLLECTION - BRUSH COLLECTION BEGINS ZONE 4	26 CURBSIDE GARBAGE COLLECTION	27 BULK & METAL COLLECTION BY APPOINTMENT. SOUTH	28 IF TUESDAY IS YOUR GARBAGE DAY, TODAY IS YOUR RECYCLING DAY	29	30

BOROUGH RECYCLING CENTER IS OPEN MONDAY - SATURDAY 7:00 AM - 3:00 PM - CLOSED HOLIDAYS

BOROUGH OF TINTON FALLS

PET WASTE AND WATER POLLUTION



The Borough of Tinton Falls has adopted and enforces an ordinance that requires immediate and proper disposal of solid pet waste deposited on any property not owned or possessed by the pet owner or keeper. Violators of the ordinance may receive up to a \$1,000.00 fine.

Pet waste is carried by rain, melting snow, and ice to storm drains that empty into rivers, lakes, and the ocean. It also reaches reservoirs which supply much of the drinking water in New Jersey.

Pollution due to pet waste negatively impacts swimming, boating and fishing in these water bodies.

Pet waste contains microorganisms that can cause bacterial diseases, roundworms and parasitic infections.

In addition, pet waste contains harmful levels of nutrients which promote excessive algae and plant growth. This can rob the waterbody of oxygen, potentially killing all aquatic life in the area. Such nutrient pollution also causes waters to become cloudy and green.



Proper Pet Waste Disposal

Flush it down the toilet.

But do not flush bags, debris, or nonbiodegradable items

OR

Put it in the trash.

**THANK YOU FOR
DOING YOUR PART
TO KEEP
NEW JERSEY'S
WATERS CLEAN**



For More
Info

- See Pet Waste Ordinance www.tintonfalls.com
- NJDEP Municipal Stormwater Regulation https://www.nj.gov/dep/dwq/msrp_home.htm
- EPA- Polluted Runoff: Nonpoint Source Pollution <https://www.epa.gov/nps>



FRIENDS OF THE CRAWFORD HOUSE

The non-profit Friends of the Crawford House was formed to work with the Historic Commission as steward for the Crawford House and advocate for our Borough history. Members of the Friends work to preserve, protect, and promote local history through displays, programs, tours, and other educational activities. For more information, visit the thecrawfordhouse.org website.

August 2022



Sunday	Monday	Tuesday	Wednesday	Thursday	Friday	Saturday
31 PROPERTY TAXES ARE DUE ON THE 1ST	1 CURBSIDE GARBAGE COLLECTION - BRUSH COLLECTION BEGINS ZONE 1	2 CURBSIDE GARBAGE COLLECTION	3 BULK & METAL COLLECTION BY APPOINTMENT. NORTH	4 IF MONDAY IS YOUR GARBAGE DAY, TODAY IS YOUR RECYCLING DAY	5	6
7	8 CURBSIDE GARBAGE COLLECTION - BRUSH COLLECTION BEGINS ZONE 2	9 CURBSIDE GARBAGE COLLECTION	10 BULK & METAL COLLECTION BY APPOINTMENT. SOUTH	11 IF TUESDAY IS YOUR GARBAGE DAY, TODAY IS YOUR RECYCLING DAY	12	13
14	15 CURBSIDE GARBAGE COLLECTION - BRUSH COLLECTION BEGINS ZONE 3	16 CURBSIDE GARBAGE COLLECTION	17 BULK & METAL COLLECTION BY APPOINTMENT. NORTH	18 IF MONDAY IS YOUR GARBAGE DAY, TODAY IS YOUR RECYCLING DAY	19	20
21	22 CURBSIDE GARBAGE COLLECTION - BRUSH COLLECTION BEGINS ZONE 4	23 CURBSIDE GARBAGE COLLECTION	24 BULK & METAL COLLECTION BY APPOINTMENT. SOUTH	25 IF TUESDAY IS YOUR GARBAGE DAY, TODAY IS YOUR RECYCLING DAY	26	27
28	29 CURBSIDE GARBAGE COLLECTION	30 CURBSIDE GARBAGE COLLECTION	31 NO BULK OR METAL COLLECTION TODAY	1	2	3

BOROUGH RECYCLING CENTER IS OPEN MONDAY - SATURDAY 7:00 AM - 3:00 PM - CLOSED HOLIDAYS



Tinton Falls Senior Citizen Group

The Tinton Falls Senior Citizen Group was established in 1972. In 2010, the group began meeting at the Tinton Falls Municipal Building, 556 Tinton Avenue, Basement Community Room, on the second Wednesday of each month. Registration at 11:00 am, Social Hour at 11:30, and the Business Meeting at 12 Noon.

The purpose and objectives are to:

1. Further recreational and educational opportunities for Tinton Falls Senior Residents, 55 years of age or over, who in their retirement years, wish to make wise use of their leisure time.
2. Promote moral and mental health, and to develop friendships by encouraging leisure activities.
3. Plan, develop, and engage in beneficial activities
4. Participate whenever possible in Tinton Falls Community Senior Citizens Programs.

Any Tinton Falls resident, 55 years of age and older, may join the group by contacting: Membership Chair Rosemary Kochman at: rosemarykochman@hotmail.com

MONMOUTH COUNTY HOUSEHOLD HAZARDOUS WASTE FACILITY



Location: 3211 Shafto Road, Tinton Falls
(Building H - One mile from the intersection of
Shafto Road and Asbury Avenue)

Telephone: 732-683-8686

Call for Hours and days open.



Acceptable Items:



Liquid paint, mercury containing devices (thermostats, thermometers) gasoline, motor oil & other automotive fluids, used oil filters, all herbicides, all pesticides, all solvents, wood preservatives, oxygen tanks, fire extinguishers, rechargeable batteries, button batteries, car batteries, any household cleaners, stains, unbroken fluorescent tubes, fertilizers, kerosene, insecticides, DDT, muriatic acid, freon, anti-freeze, photographic chemicals, cooking oil, propane tanks



Maximum amount per visit:
220 lbs. of dry material / 20 gal. of liquid
(no container larger than 5 gals).

Facility is for Monmouth County residents only.
Business owners must contact a private hauler.



September 2022



Sunday	Monday	Tuesday	Wednesday	Thursday	Friday	Saturday
28	29	30	31	1 IF MONDAY IS YOUR GARBAGE DAY, TODAY IS YOUR RECYCLING DAY	2	3
4	5 BOROUGH HOLIDAY	6 CURBSIDE GARBAGE COLLECTION - BRUSH COLLECTION BEGINS ZONE 1	7 HOLIDAY GARBAGE COLLECTION	8 IF TUESDAY IS YOUR GARBAGE DAY, TODAY IS YOUR RECYCLING DAY	9 BULK & METAL COLLECTION BY APPOINTMENT. NORTH	10
11	12 CURBSIDE GARBAGE COLLECTION - BRUSH COLLECTION BEGINS ZONE 2	13 CURBSIDE GARBAGE COLLECTION	14 BULK & METAL COLLECTION BY APPOINTMENT. SOUTH	15 IF MONDAY IS YOUR GARBAGE DAY, TODAY IS YOUR RECYCLING DAY	16	17
18	19 CURBSIDE GARBAGE COLLECTION - BRUSH COLLECTION BEGINS ZONE 3	20 CURBSIDE GARBAGE COLLECTION	21 BULK & METAL COLLECTION BY APPOINTMENT. NORTH	22 IF TUESDAY IS YOUR GARBAGE DAY, TODAY IS YOUR RECYCLING DAY	23	24
25	26 CURBSIDE GARBAGE COLLECTION - BRUSH COLLECTION BEGINS ZONE 4	27 CURBSIDE GARBAGE COLLECTION	28 BULK & METAL COLLECTION BY APPOINTMENT. SOUTH	29 NO RECYCLING COLLECTION TODAY	30	1

BOROUGH RECYCLING CENTER IS OPEN MONDAY - SATURDAY 7:00 AM - 3:00 PM - CLOSED HOLIDAYS

BULK AND METAL ITEMS

To schedule a bulk or metal pick up,
Call 732-542-3400 Ext. 4.

Large items which will not fit into your automated container must be scheduled for collection. Televisions and electronics will not be collected at the curb. Only Bulk items are collected. Bagged items will not be collected on bulk day and must be placed with your household refuse. Construction debris, wood windows or doors will NOT be collected and cannot be placed at the curb with your bulk or automated refuse container. Contractors are responsible for removal and disposal of their debris.

Doors must be removed from appliances. Propane tanks, televisions and electronics will not be collected at the curb.

CONSTRUCTION DEBRIS

Construction debris is the responsibility of the contractor and/or resident to remove. This includes lumber, paneling, plasterboard, roofing material, wood, fence, concrete, asphalt, or brick and similar items. Most of the above items may be brought to the Monmouth County Reclamation Center located on Asbury Ave. in Tinton Falls. For more information on disposal hours and cost you may call the Monmouth County Reclamation Center at 732-683-8686.

ZONING BOARD OF ADJUSTMENT

The Zoning Board of Adjustment hears and decides requests for variances from the provisions of the Borough Zoning Ordinance, as well as non-permitted Site Plans and Subdivisions. The Board is comprised of 7 Regular Members and 2 Alternate Members.

All members are Tinton Falls residents and are appointed by the Borough Council. The Zoning Board meets the first Thursday of each month with the exceptions of holidays.

ZONING BOARD OFFICE CONTACT

PHONE: 732-542-3400 EXT. 215

FAX: 732-578-9003

Email: zoningboard@tintonfalls.com



October 2022



Sunday	Monday	Tuesday	Wednesday	Thursday	Friday	Saturday
26	27	28	29	30	31 SEWER BILLS ARE DUE ON THE 1ST	1
2	3 CURBSIDE GARBAGE COLLECTION - BRUSH COLLECTION BEGINS ZONE 1	4 CURBSIDE GARBAGE COLLECTION	5 BULK & METAL COLLECTION BY APPOINTMENT. NORTH	6 IF MONDAY IS YOUR GARBAGE DAY, TODAY IS YOUR RECYCLING DAY	7	8
9 TINTON FALLS COMMUNITY DAY	10 BOROUGH HOLIDAY	11 CURBSIDE GARBAGE COLLECTION - BRUSH COLLECTION BEGINS ZONE 2	12 HOLIDAY GARBAGE COLLECTION	13 IF TUESDAY IS YOUR GARBAGE DAY, TODAY IS YOUR RECYCLING DAY	14 BULK & METAL COLLECTION BY APPOINTMENT. SOUTH	15
16	17 CURBSIDE GARBAGE COLLECTION - BRUSH COLLECTION BEGINS ZONE 3	18 CURBSIDE GARBAGE COLLECTION	19 BULK & METAL COLLECTION BY APPOINTMENT. NORTH	20 IF MONDAY IS YOUR GARBAGE DAY, TODAY IS YOUR RECYCLING DAY	21	22
23	24 CURBSIDE GARBAGE COLLECTION - BRUSH COLLECTION BEGINS ZONE 4	25 CURBSIDE GARBAGE COLLECTION	26 BULK & METAL COLLECTION BY APPOINTMENT. SOUTH	27 IF TUESDAY IS YOUR GARBAGE DAY, TODAY IS YOUR RECYCLING DAY	28	29
30	31	1	2	3	4	5

BOROUGH RECYCLING CENTER IS OPEN MONDAY - SATURDAY 7:00 AM - 3:00 PM - CLOSED HOLIDAYS



LEAVES & PINE NEEDLES

Leaves and pine needles are collected **only** during the months of **May, November and December** as per zone. Leaves and pine needles **should not** be put out any other time.

Please place your leaves **above** the curb along the front of your property and **not** on the street surface for collection. Leaves in the street may create traffic hazards, clog our storm drains, and cause flooding. Leaves placed in **biodegradable** paper bags will also be collected. Leaves in plastic bags will not be collected. Please leave adequate room for our machinery to work and do not mix leaves with brush.



BRUSH COLLECTION

Place in long low piles **above the curb at the edge of the road, not in the street**. Branches can be no longer than five feet in length. Tree stumps or large tree trunks in excess of six inches in diameter will not be collected nor accepted at the Tinton Falls Recycling Center. Do not mix leaves or pine needles with brush.

Do not place brush out for collection after your street has been picked up. If you miss your scheduled pick-up, you may bring your brush to the Tinton Falls Recycling Center located behind Borough Hall.

GRASS

It is suggested that you cut it and leave it on the lawn. Grass clippings will not be picked up. Do not leave grass clippings at the curb. **Do not** mix grass clippings with leaves, branches and brush or with household garbage. Grass **will not** be accepted at the Borough recycling center behind Borough Hall. You may take your grass to the Monmouth County Reclamation Center grass drop-off site which is located on Asbury Avenue, West of Shafto Road in Tinton Falls.

DO NOT PLACE BRUSH OR LEAVES WITHIN 10 FEET OF A STORM DRAIN

Tinton Falls Public Library

In 1961 a dedicated group of residents collected books door-to-door and founded the Tinton Falls Public Library. Initially the library occupied a space in a corner of the Luther Memorial Church before moving to a larger space in the old Borough Hall. The library moved to its present location on Tinton Avenue in front of the Tinton Falls Middle School in approximately 1975.

In August 2017, the library closed because mold was discovered in the attached trailer, which was connected to the building in 2015 for use as office and meeting space. The trailer is presently sealed off and slated to be removed as part of the wider remediation planned for the building. The Library Board and Borough officials are trying to secure grant funding to re-open the library; the Board is also coordinating fundraisers like the Save the Library Music Festival and a children's Fashion Show.

Currently, the Tinton Falls Public Library Board meets the first Thursday of the month. If you're interested in helping with fundraisers or supporting the library's efforts to re-open, please contact the Board by sending an email to tintonfallslibraryassociation@gmail.com.



November 2022



Sunday	Monday	Tuesday	Wednesday	Thursday	Friday	Saturday
30	31 PROPERTY TAXES ARE DUE ON THE 1ST	1	2 BULK & METAL COLLECTION BY APPOINTMENT. NORTH	3 IF MONDAY IS YOUR GARBAGE DAY, TODAY IS YOUR RECYCLING DAY	4	5
6	7 CURBSIDE GARBAGE COLLECTION - BRUSH & LEAF COLLECTION BEGINS ZONE 1	8 CURBSIDE GARBAGE COLLECTION	9 BULK & METAL COLLECTION BY APPOINTMENT. SOUTH	10 IF TUESDAY IS YOUR GARBAGE DAY, TODAY IS YOUR RECYCLING DAY	11 BOROUGH HOLIDAY	12
13	14 CURBSIDE GARBAGE COLLECTION - BRUSH & LEAF COLLECTION BEGINS ZONE 2	15 CURBSIDE GARBAGE COLLECTION	16 BULK & METAL COLLECTION BY APPOINTMENT. NORTH	17 IF MONDAY IS YOUR GARBAGE DAY, TODAY IS YOUR RECYCLING DAY	18	19
20	21 CURBSIDE GARBAGE COLLECTION - BRUSH & LEAF COLLECTION BEGINS ZONE 3	22 CURBSIDE GARBAGE COLLECTION	23 IF TUESDAY IS YOUR GARBAGE DAY, TODAY IS YOUR RECYCLING DAY	24 BOROUGH HOLIDAY	25 BOROUGH HOLIDAY	26
27	28 CURBSIDE GARBAGE COLLECTION - BRUSH & LEAF COLLECTION BEGINS ZONE 4	29 CURBSIDE GARBAGE COLLECTION	30 BULK & METAL COLLECTION BY APPOINTMENT. SOUTH	1	2	3

BOROUGH RECYCLING CENTER IS OPEN MONDAY - SATURDAY 7:00 AM - 3:00 PM - CLOSED HOLIDAYS

SNOW PLOWING & YOUR MAILBOX

Proper curbside installation is crucial to the survival of your mailbox during the winter snow events. Our plow operators clear accumulations to the curb to provide safe streets and to minimize flooding from blocked storm drains. Mailbox installations must be sturdy enough to withstand discharged snow and adequate clearance must be present between the curb and the box for plow passage.



The Borough will only repair or replace mailboxes that are installed according to USPS guidelines below and are struck by a plow. Mailboxes will not be replaced due to snow discharged properly from Borough equipment. Any mailboxes replaced by the Borough will be standard quality only.

Visit the site below for some tips on curbside mailbox placement that will help reduce the chance of damage during snow plowing operations.

Please visit www.usps.com/manage/mailboxes.htm for additional information.



SNOW EVENT PARKING BAN Borough Ordinance 7-3.3

Whenever snow has fallen and the accumulation is such that it covers the streets or highways within the Borough, an emergency shall exist, and no vehicle shall be parked on any street or portion thereof.

The parking prohibition shall remain in effect after the snow has ceased until the streets have been plowed sufficiently and to the extent that parking will not interfere with the normal flow of traffic.

TINTON FALLS ENVIRONMENTAL COMMISSION

The Tinton Falls Environmental Commission is comprised of Borough residents who are committed to protecting and preserving the Borough's environmental resources, including the 5 stream corridors within the Borough's limits, the Borough's remaining undeveloped forests and other ecologically sensitive areas.

The Environmental Commission works closely with the Planning Board in an advisory capacity, evaluating proposed development in the Borough and commenting on the benefits or harmful effects of the proposals. The Planning Board and Environmental Commission have one common member. This allows for effective communication between these groups on matters concerning development in environmentally sensitive areas of the Borough.

The Commission is further assisted by the Borough's Environmental advisor, T&M Associates. They assist with the development of projects aimed at preserving or improving the Borough's natural resources. The Environmental Consultant also comments on applications which impact the Borough's Natural Resources.

The Commission is made up of 7 members and 2 alternates. The Commission meets at Borough Hall at 7:30 pm on the 4th Thursday of the month. These meetings are open to the Public, and the commission welcomes any and all interested residents to come to the meetings with questions or comments about any of the Borough's environmental issues.

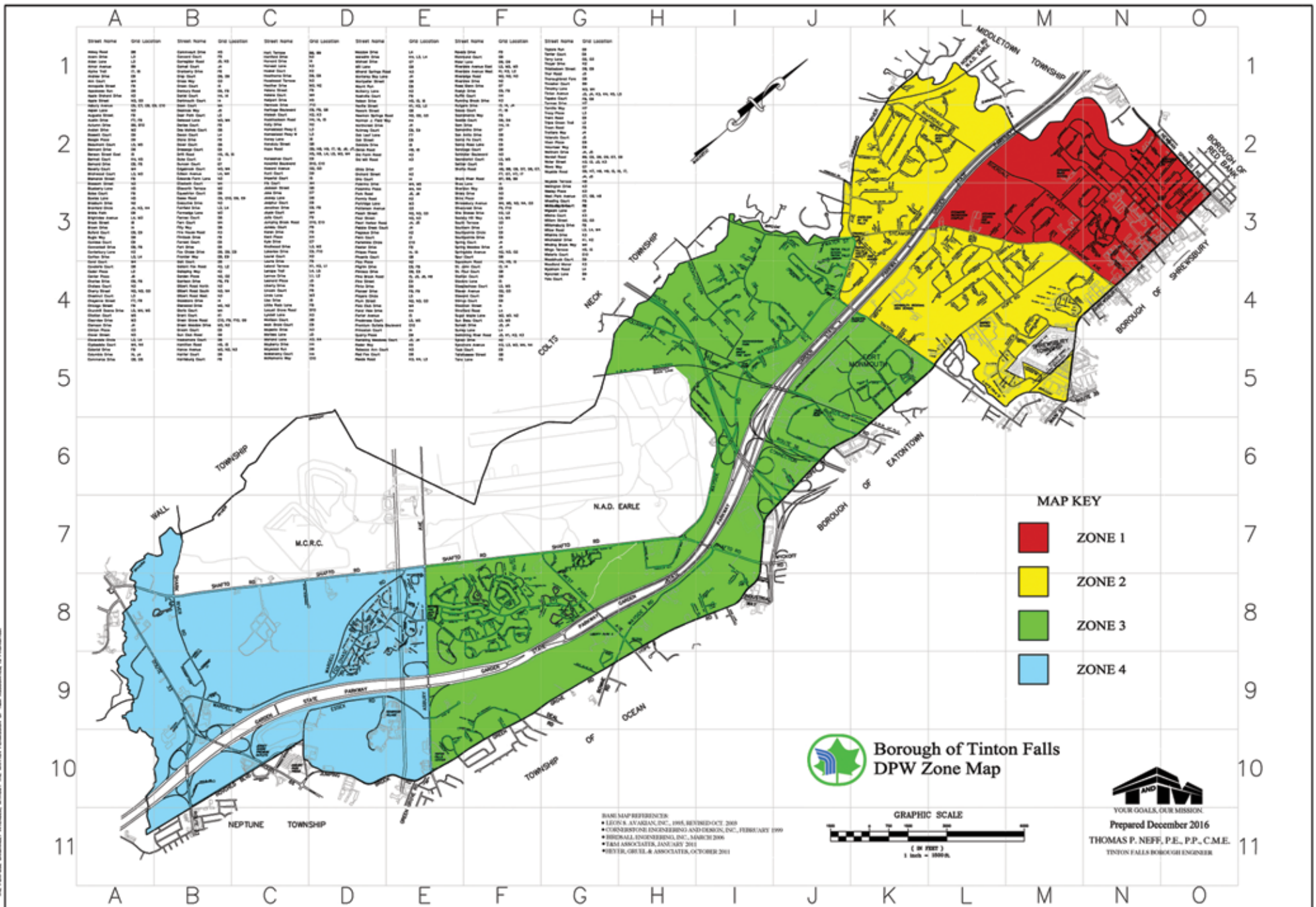
EMAIL: Environmental@tintonfalls.com

December 2022



Sunday	Monday	Tuesday	Wednesday	Thursday	Friday	Saturday
28	29	30	31	1 IF MONDAY IS YOUR GARBAGE DAY, TODAY IS YOUR RECYCLING DAY	2	3
4	5 CURBSIDE GARBAGE COLLECTION - BRUSH & LEAF COLLECTION BEGINS ZONE 1	6 CURBSIDE GARBAGE COLLECTION	7 BULK & METAL COLLECTION BY APPOINTMENT. NORTH	8 IF TUESDAY IS YOUR GARBAGE DAY, TODAY IS YOUR RECYCLING DAY	9 BULK & METAL COLLECTION BY APPOINTMENT. SOUTH	10
11	12 CURBSIDE GARBAGE COLLECTION - BRUSH & LEAF COLLECTION BEGINS ZONE 2	13 CURBSIDE GARBAGE COLLECTION	14 BULK & METAL COLLECTION BY APPOINTMENT. SOUTH	15 IF MONDAY IS YOUR GARBAGE DAY, TODAY IS YOUR RECYCLING DAY	16	17
18	19 CURBSIDE GARBAGE COLLECTION - BRUSH & LEAF COLLECTION BEGINS ZONE 3	20 CURBSIDE GARBAGE COLLECTION	21 BULK & METAL COLLECTION BY APPOINTMENT. NORTH	22 IF TUESDAY IS YOUR GARBAGE DAY, TODAY IS YOUR RECYCLING DAY	23 BOROUGH HOLIDAY	24
25	26 BOROUGH HOLIDAY	27 CURBSIDE GARBAGE COLLECTION - BRUSH & LEAF COLLECTION BEGINS ZONE 4	28 MONDAY HOLIDAY GARBAGE COLLECTION	29 IF MONDAY IS YOUR GARBAGE DAY, TODAY IS YOUR SPECIAL HOLIDAY RECYCLING DAY	30 IF TUESDAY IS YOUR GARBAGE DAY, TODAY IS YOUR SPECIAL HOLIDAY RECYCLING DAY	31

BOROUGH RECYCLING CENTER IS OPEN MONDAY - SATURDAY 7:00 AM - 3:00 PM - CLOSED HOLIDAYS



BOROUGH OF TINTON FALLS PARKS

	SOCCER FIELDS	BASEBALL FIELDS	SOFTBALL FIELD	BASKET BALL COURT	FOOTBALL FIELD	SPORTS LIGHTING	TENNIS COURTS	PICNIC AREA	PAVILLION/GAZEBO	VOLLEYBALL COURT	CONCESSION STAND	RESTROOM FACILITIES	PLAYGROUND/TOT LOT	PASSIVE RECREATION	DOG PARK	WALKING TRAILS	HISTORIC SITE	PICKLEBALL
HANCE PARK 12 WILLIAM ST			✓	✓				✓					✓					
HOCKHOCKSON PARK - 295 HOCKHOCKSON ROAD		✓		✓		✓		✓	✓	✓	✓	✓	✓					
ATCHISON FIELDS- 961 SYCAMORE AVENUE BEHIND THE SCHOOL	✓		✓	✓			✓	✓								✓		
TRIANGLE - TOWN SQUARE - 9 FIREHOUSE RD									✓					✓				
PINE BROOK/KIVA PARK - 1880 WAYSIDE RD								✓	✓					✓				
PINE BROOK PARK - 1175 PINE BROOK ROAD								✓						✓				
OVERLOOK BY THE FALLS - 741 TINTON AVE														✓		✓		
RIVERDALE AVE WEST PARK - 400 RIVERDALE AVE WEST	✓			✓								✓	✓	✓				
SYCAMORE RECREATION COMPLEX - 977 SYCAMORE AVE	✓					✓		✓	✓		✓	✓	✓			✓		
LIBERTY II PARK 1420 WEST PARK AVENUE			✓	✓	✓			✓	✓		✓	✓	✓	✓	✓	✓		
CRAWFORD HOUSE 750 TINTON AVENUE														✓			✓	
RIVERDALE AVE WEST WALKING TRAILS - ACROSS FROM PARK														✓		✓		
WARDELL PARK 230 WARDELL ROAD				✓		✓	✓					✓	✓	✓		✓		✓

PARK PERMIT FORMS ARE AVAILABLE ONLINE AT WWW.TINTONFALLS.COM

THE PUBLIC WORKS DEPARTMENT IS DEDICATED TO PROVIDE SAFE PARKS AND FACILITES FOR THE BOROUGH.
PLEASE EXPLORE OUR PARKS AND FACILITES THAT THE PUBLIC WORKS DEPARTMENT WORKS TO MAINTAIN FOR YOUR ENJOYMENT.



**BOROUGH OF TINTON FALLS
556 TINTON AVENUE
TINTON FALLS, NJ 07724**

PRSRT STD
ECRWSS
U.S. Postage Paid
Red Bank, NJ
Permit #426

POSTAL PATRON